



Charles Clement Turnkey Project

1969 – 1970

16 Concrete Sculptural Elements

Turnkey Development

Edson and Goldblatt, AIA Architects



TUCSON
HISTORIC PRESERVATION
FOUNDATION

Charles Alfred Clement: Biography & Education

- **Charles Alfred Clement (1921–1981)**
Born in New York City to French parents, Clement trained in industrial design and illustration and developed a wide-ranging artistic career.
- **Education**
 - Graduated in 1943 from the **Franklin School of Professional Arts**, New York, majoring in industrial and general design and illustration.
 - Completed additional coursework at **Brooklyn College**, **The New School**, and in **Aix-en-Provence, France**.
- **Tucson Life & Work**
 - Moved to **Tucson in 1950** with his wife, Louise Edméa Clement.
 - Designed and built their home and studio, "**Belnido**," in 1952.
 - Maintained a **multidisciplinary practice**, creating sculpture, murals, mosaics, ceramics, architectural ornamentation, and industrial design throughout Tucson.
 - **Died in 1981** while traveling abroad.



Clement Major Public Art Projects

- **University of Arizona Administration Building (1966–67)**
 - Created a large **fiberglass sculpted screen** integrated into the façade, contributing to the modernist architectural character of the campus.
- **“Noah’s Ark” Sculpture (1966)**
 - Produced a mobile-sized modernist sculpture originally installed at the **Catalina Foothills School District** and later displayed at the **Reid Park Zoo**.
- **Presidio Plaza Fountain (1971)**
 - Designed a geometric **modernist fountain** as a focal feature of Tucson’s Presidio Plaza.
- **Broadway Podiatry Building Panels (1971)**
 - Created **cast concrete sculptural panels** that animate the façade of this commercial building.
- **Additional Civic Works**
 - Relief murals, mosaics, and integrated sculptural elements for schools, civic buildings, and public spaces throughout Tucson.

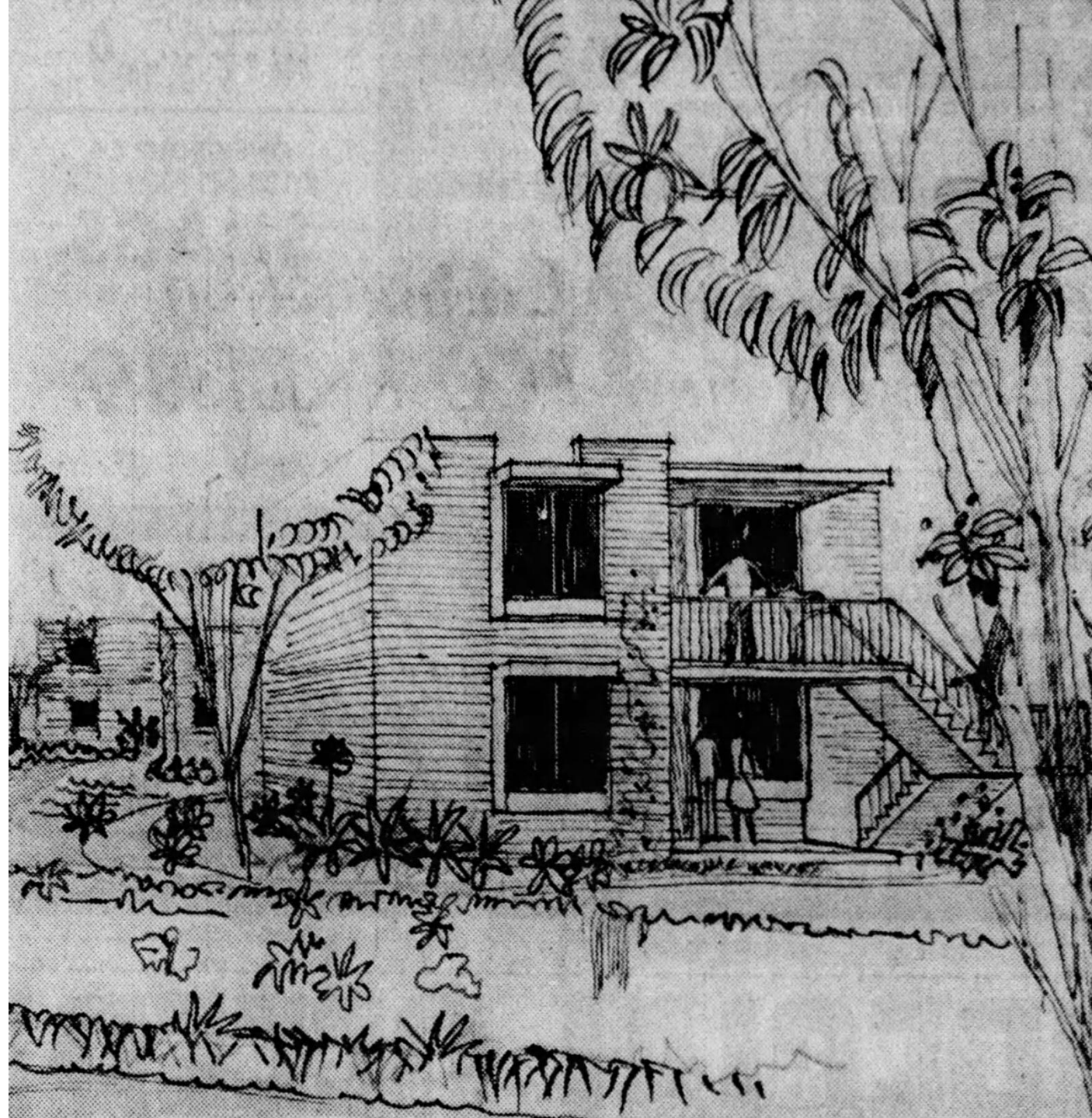




Lost Noah's Ark Sculpture, 1966

Turnkey Housing Project (1969 1970)

- **80-unit federal turnkey public housing project**, with construction beginning April 2, 1970.
- Designed by **Mark Edson** and **William Goldblatt**; built by private contractors for the Tucson Housing Authority.
- Became a focal point for **equitable hiring**, with community advocate **Hubert Davis** pressing for Black employment and monitoring compliance with federal labor rules.
- **Charles Clement** was commissioned to create a **site-specific sculptural work** for the project sixteen (16) pieces, integrating art into the new community environment.
- Project symbolized major federal investment paired with local demands for civil rights, inclusion, and neighborhood representation.



DRAWING NUMBER
10180

INVENTED DATE 7-20-74
ENTERED IN 10/17/74
BY J. G. GARDNER
CHECKED BY J. G. GARDNER
DATE 10/17/74
SAVED IN DRAWING FOLDER

DRAWING NUMBER

DRAWING NUMBER

DRAWING NUMBER

80 UNIT-TURNKEY HOUSING PROJECT

FOR

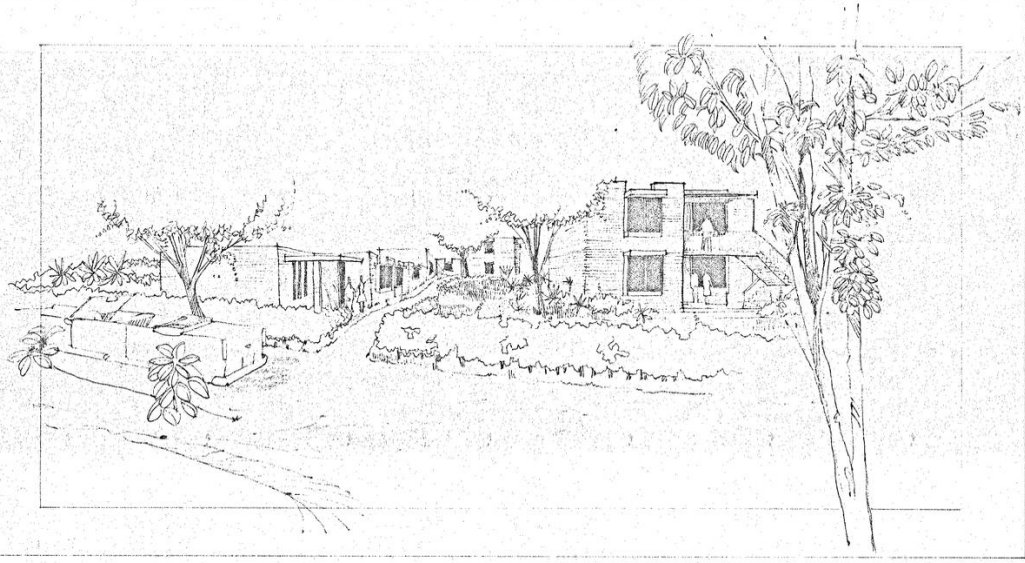
THE TUCSON HOUSING AUTHORITY

ARIZ. 4-6



UNIT DISTRIBUTION				
SITE NUMBER	BLDG NUMBER	TOTAL GROSS FLOOR AREA/BLDG	DWELLING UNIT TYPE/BLDG	TOTAL D.U. SITE
1	1A	1741.24	1-2BR	2
	2A	1741.90	1-1BR	
2	2B	3192.40	2-3BR	5
			1-4 BR	
3	3A	1741.24	1-2BR	2
	4A	1741.90	1-4 BR	
4	4B	3192.40	2-2BR	5
			1-4 BR	
5	5A	1741.24	1-2BR	2
			1-4 BR	
6	6A	1741.90	1-1 BR	5
	6B	3192.40	2-3 BR	
7	7A	6980.93	5-3 BR	10
	7B	2711.43	2-2 BR	
8	8A	1741.90	1-1 BR	5
	8B	3192.40	2-3 BR	
9	9A	6980.93	5-3 BR	10
	9B	2711.43	2-2 BR	
10	10A	1741.24	1-2 BR	2
			1-4 BR	
11	11A	1741.90	1-1 BR	5
	11B	3192.40	2-3 BR	
12	12A	1741.90	1-1 BR	5
	12B	3192.40	2-3 BR	
13	13A	1741.90	1-1 BR	5
	13B	3192.40	2-3 BR	
14	14A	4005.4	4-3 BR	17
	14B	6002.10	4-3 BR	
	14C	5718.46	1-1 BR	
TOTALS		75,681.04	2-1 BR (10%) 16-2 BR (21%) 40-3 BR (53%) 16-4 BR (21%)	80

SYMBOLS	
	SLUMP BLOCK (CONCRETE BLOCK, WHERE NOTED)
	CONCRETE
	INSULATION
	WOOD
	SECTION LETTER OR DETAIL NUMBER
	LOCATION OF DRAWING
	WINDOW TYPE
	DOOR TYPE
	ROOM NUMBERS

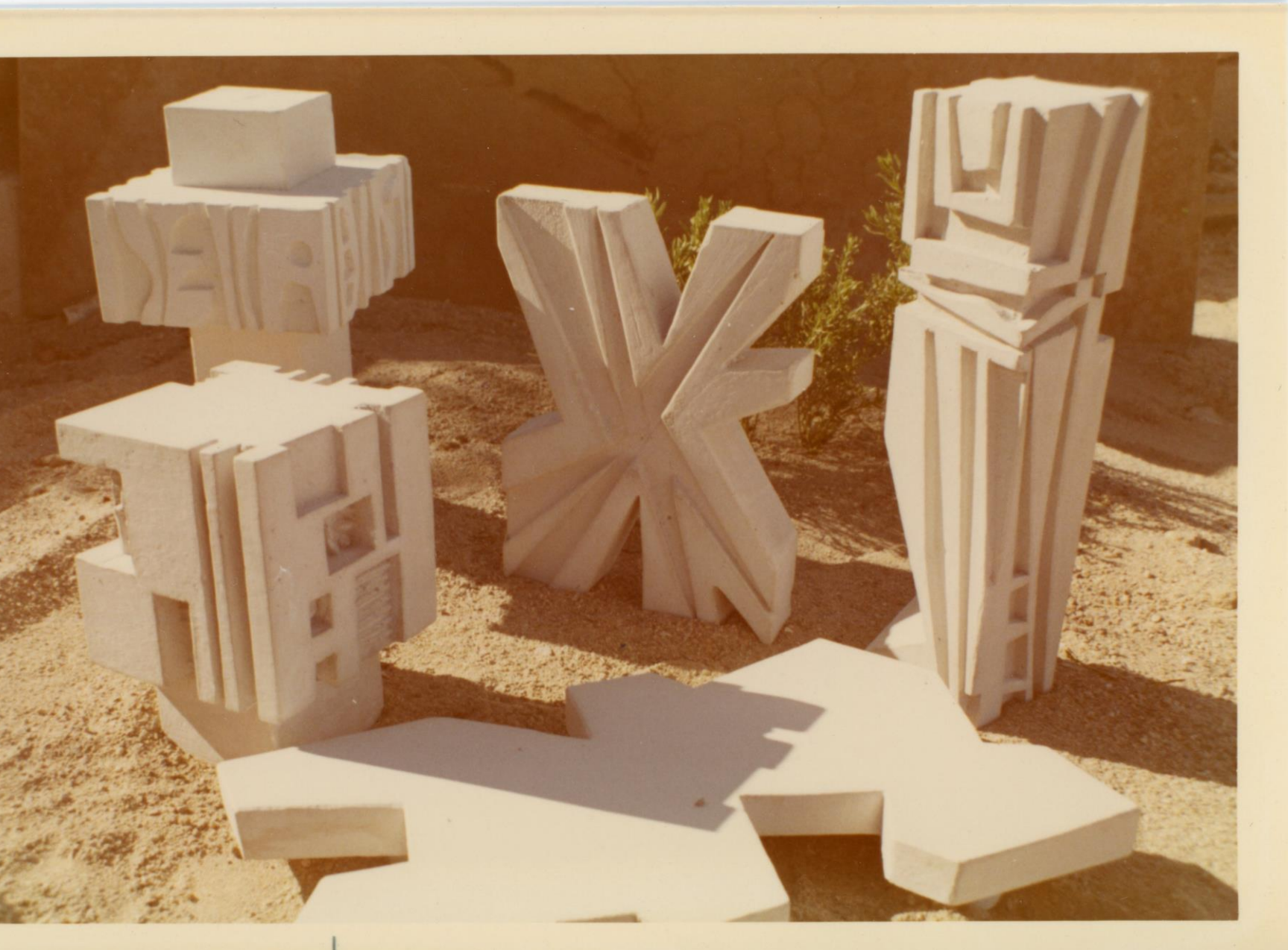


HOUSING ASSOCIATES INC.
4580 HEATON DRIVE · COLUMBUS · OHIO
DEVELOPERS

DRAWING INDEX	
1	TITLE
2	SITES 1-2-3-4-10 with ELECTRICAL
3	SITES 5-11-12 and 13 with ELECTRICAL
4	SITES 7-8 and 10 with ELECTRICAL
5	SITES 9 and 14 with ELECTRICAL
6	TYPICAL LANDSCAPE PLANS
7	UNIT PLANS - 1-5 SCHEDULES
8	DETAILS and SECTIONS
9	BLDG'S - 1A, 2A, 3A, 4A, 5A, 6A, 7A, 8A, 9A, 10A
10	BLDG'S - 2B, 4A, 6A, 11A, 12A and 13A
11	BLDG'S - 2B, 4B, 6B, 11B, 12B and 13B
12	BLDG'S - 7A and 9A
13	BLDG'S - 7B and 9B
14	BLDG'S - 14B
15	BLDG'S - 14C
16	BLDG'S - 14C
17	PLUMBING SITE PLANS - 1, 2, 3, 4 and 6
18	PLUMBING SITE PLANS - 8, 11, 12 and 13
19	PLUMBING SITE PLANS - 7, 9, 10 and 10
20	PLUMBING SITE PLANS - 7 and 14
21	HEATING-COOLING UNIT PLANS
22	PLUMBING UNIT PLANS
23	ELECTRICAL UNIT PLANS
24	COMMUNITY BLDG. - SITES and LOCATION MAP
25	COMMUNITY BLDG. - FLOOR, FOUNDATION, ROOF FRAMING PLAN
26	COMMUNITY BLDG. - ELEVATION, SECTION, DETAILS
27	COMMUNITY BLDG. - INTERIOR ELEVATION'S DETAILS
28	COMMUNITY BLDG. - MECHANICAL & PLUMBING
29	COMMUNITY BLDG. - ELECTRICAL

ABBREVIATIONS			
ADD.	ADDITION	GAL.	GALLONS
ASB.	ASBESTOS	GR.	GRADE
BLDG.	BUILDING	H.M.	HOLLOW METAL
BLK.	BLOCK	H.W.	HARDWARE
BRG.	BREAKING	HDR.	HEADER
BRG.	BREAKING	JT	JOINT
BTM.	BOTTOM	MEC. CAB.	MEDICINE CABINET
BM.	BEAM	MCH.	MECHANICAL
CL.	CLOSET	M.S.	MINIMUM
CONC.	CONCRETE	MUL.	MULLION
CONC.	CONCRETE	N.I.C.	NOT IN CONTRACT
COND.	CONDITION	O.C.	ON CENTER
CONC.	CONCRETE WALLS	PACT.	PARTITION
CONC.	CONCRETE	PL.	PLATE
C.O.J.	CONSTRUCTION JOINT	PL.	PLACEMENT
COB.	CORNER	R.	ROOM
DWG.	DRAWING	REIN.	REINFORCED
DOOR	DOOR	REF.	REFLECTOR
E.A. WAY	EACH WAY	SUSP.	SUSPENDED
EXIST.	EXISTING	SUPP.	SUPPORT
EXTR.	EXTRUSIVE	SWALK	SWALK
ELEV.	ELEVATION	STO.	STORAGE
E.V.	EXTENSION JOINT	S.F.	SQUARE FEET
EXT.	EXTENSION	TOP	TOP OF SLAB
FL.	FLOOR	TYP.	TYPICAL
FR.	FRONTING	W.C.	WATER CLOSET
FIN.	FINISH	W.D.	WOOD
FR.	FRAME	W.D.	WOOD

TITLE
 EDSON and GOLDBLATT
 ARCHITECTS
 TUCSON, ARIZONA
 3869
 1-32
 SEE DRAWING 27 FOR SITE LOCATN



Charles Clement, Turnkey Models, 1969

- Clement designed a unified ensemble of sixteen cast concrete sculptures, distributed throughout the development and conceived as a single, cohesive work.
- Charles Alfred Clement was commissioned to create a site-specific sculptural work for the development. The commission was integral to the project and consistent with mid-century modernist principles that emphasized the incorporation of art into everyday environments. Clement's role was not to supply discrete decorative objects, but to contribute a sculptural program conceived as part of the architectural and social fabric of the housing complex.
- The sculptures embodied Clement's mature artistic philosophy, in which sculpture functioned as an environmental element rather than as an autonomous object.







10185
 DRAWING NUMBER
 DATE: 12-15-68
 INVENTOR: J. W. HARRIS
 CHECKED: J. W. HARRIS
 BY: J. W. HARRIS
 DRAWING NUMBER

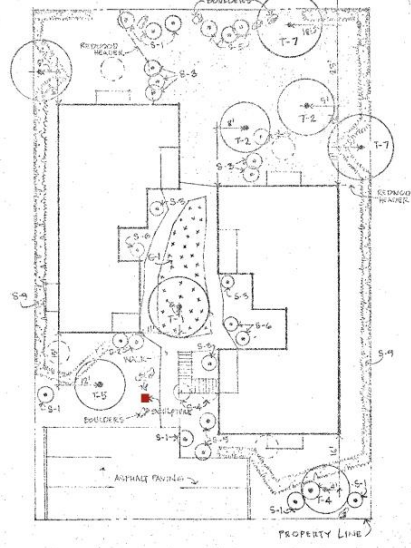
DRAWING NUMBER
 DATE: 12-15-68
 INVENTOR: J. W. HARRIS
 CHECKED: J. W. HARRIS
 BY: J. W. HARRIS
 DRAWING NUMBER

DRAWING NUMBER
 DATE: 12-15-68
 INVENTOR: J. W. HARRIS
 CHECKED: J. W. HARRIS
 BY: J. W. HARRIS
 DRAWING NUMBER

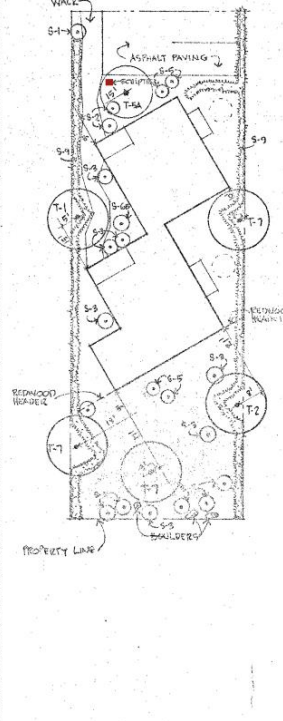
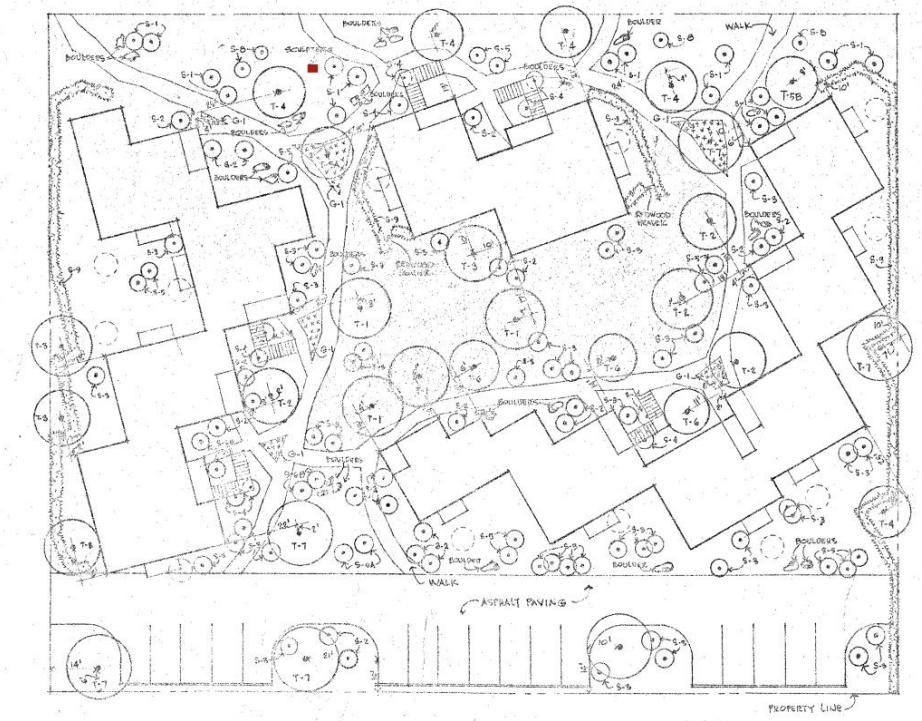
DRAWING NUMBER
 DATE: 12-15-68
 INVENTOR: J. W. HARRIS
 CHECKED: J. W. HARRIS
 BY: J. W. HARRIS
 DRAWING NUMBER



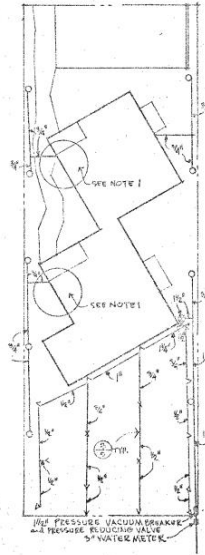
SITE 9 LANDSCAPE PLAN (SITE 7 SIMILAR)



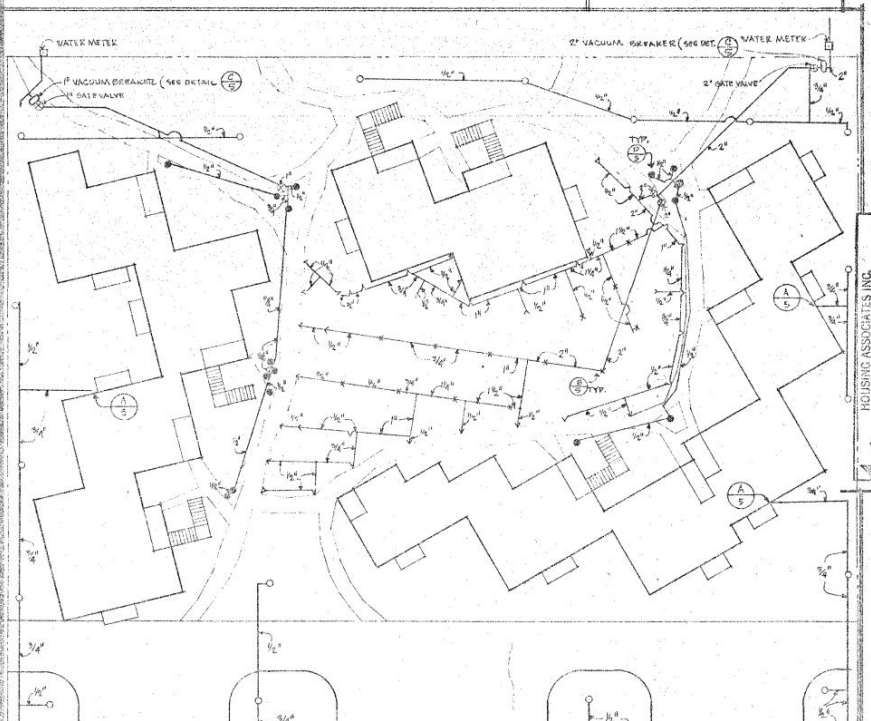
SITE 8 LANDSCAPE PLAN (SITES 2, 4, 6, 11, 12, 13 SIMILAR)



KEY	BOTANICAL NAME	COMMON NAME	SIZE	SPACING	REMARKS
T-1	FINEAS HALEPENSIS	ALEPPO FINE	5 GAL.		
T-2	MORUS ALBA	FRUITLESS MULBERRY	5 GAL.		
T-3	RHUS LANCEA	AFRICAN SUMAC	5 GAL.		
T-4	CERCIDIUM FLORIDUM	BLUE PALM VERDE	5 GAL.		
T-5A	ACACIA PARVIFLORA	SWEET ACACIA	5 GAL.		
T-5B	PROSOPIA CHILENSIS	CHILEAN MESQUITE	5 GAL.		
T-6	PRUNUS PERSICA	FLOWERING PEACH	5 GAL.		
T-7	EUCALYPTUS CAMELULENSIS	RED GUM EUCALYPTUS	5 GAL.		
S-1	QUERCUS CALIFORNICA	JOJOBA	5 GAL.		
S-2	CASSIA ARTEMISIDES	FEATHERY CASSIA	5 GAL.		
S-3	PITTOCOBULUM TORIKAI	MOCK ORANGE	5 GAL.		
S-4	LIQUIDAMBAR TENANUM	WAX LEAFED PRIVET	5 GAL.		
S-5	CORTADERIA SELLOANA	PAMPAS GRASS	5 GAL.		
S-6A	JUNIPERUS CHINENSIS	BLUE PFITZER	5 GAL.		
S-6B	JUNIPERUS SABINA	BROADLEAF JUNIPER	5 GAL.		
S-7	XYLOSMA	XYLOSMA	5 GAL.		
S-8	FOQUIERIA SPLENDENS	OCOTILLO	4'-5'		
S-9	NERIUM OLEANDER	OLEANDER	5 GAL.	4' O.C.	MIXED COLORS TRENCH 18" X 12"
G-1	TEUCRIUM CHAMAEDRYS	PROSTRATE GERMANDER	8' FTGS	18" O.C.	EAVEWAY



SITE 10 IRRIGATION PLAN (SITES 1, 3, 5 SIMILAR)



WILLOW COUNTY

TUCSON, ARIZONA

6-75-16

TYPICAL LANDSCAPE PLANS

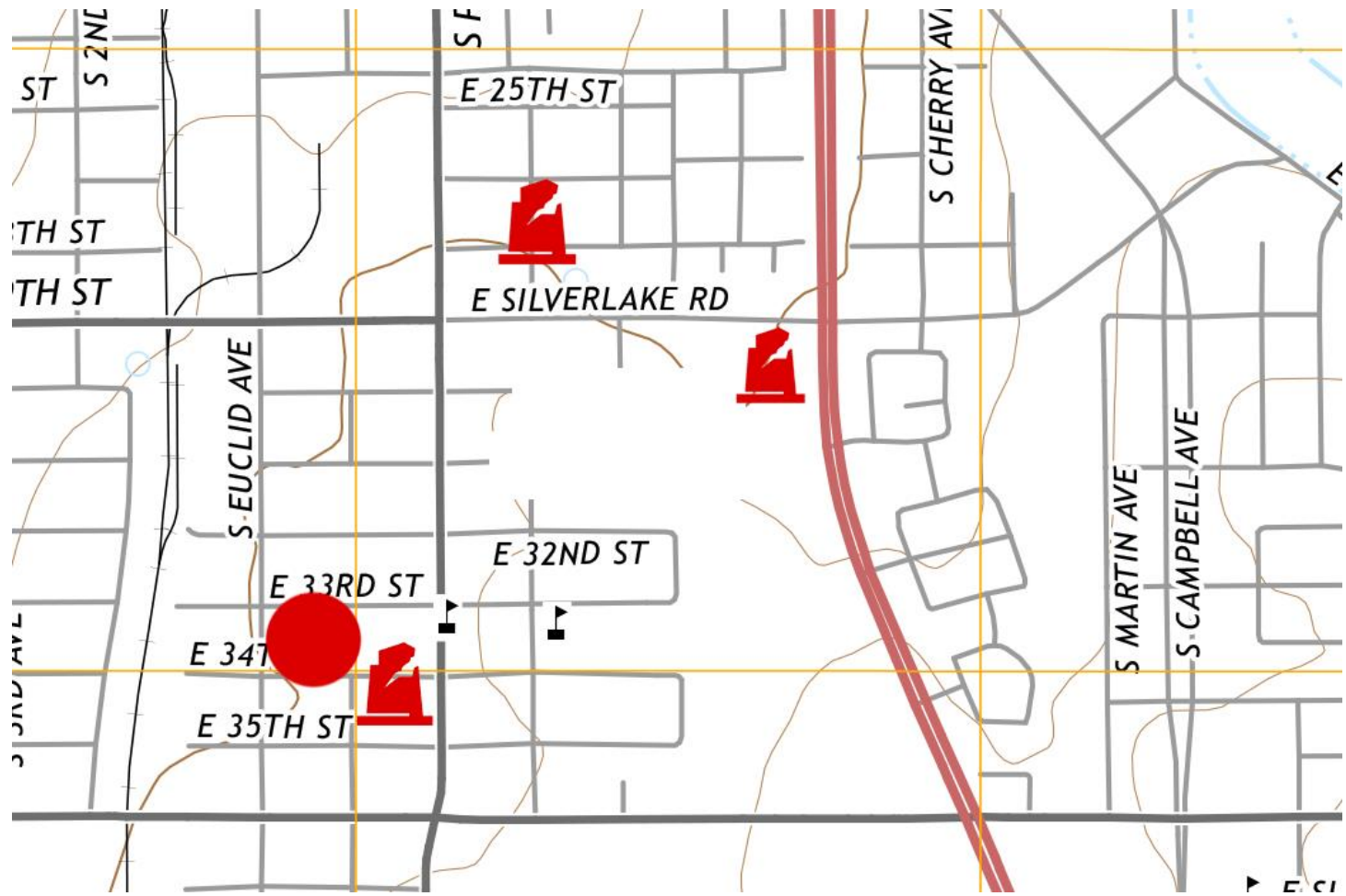
EDSON and GOLDBLATT

ARCHITECTS

HOUSING ASSOCIATES INC.
 UNIT TURNKEY HOUSING
 THE TUCSON HOUSING AUTHORITY
 PROJECT AREA

3869
 DECEMBER 15, 1968

32



- Between 1995 - 2006, during redevelopment associated with the South Park public housing area, the *Turnkey* sculptures were removed from their original locations and setting without consultation with the Clement Estate or Clement family, despite the existence of identifiable successors in interest.
- No documentation has been produced demonstrating that the City followed its required relocation procedures. There is no record of formal review, evaluation of the work's integrity, or evidence of a deaccession determination prior to fragmentation.
- Following removal, the unified sculptural ensemble was fragmented and dispersed. The sculptures were separated into three known groupings and installed at unrelated locations, without interpretive context, without clear artistic attribution, and outside the architectural environment for which they were designed. The work's original coherence was destroyed.
- As of March 2026 there are three known locations associated with the surviving known (13) of the original sixteen (16) elements of the *Turnkey* sculpture.

Location 1: South Park Avenue and East 35th Street (949 and 951 East 35th Street, Tucson, Arizona) eight (8) elements



Location 2: Silverlake Park, (originally named Kino Parkway and 36th Street District Park) located at Kino Parkway and 36th Street (2420 South Kino Parkway, Tucson, Arizona 85713). At this site, four (4) elements are present



Location 3: 1067 East Silverlake Road, City of Tucson Housing and Community Development Building (vacant)





Condition and Stewardship of the Clement Sculptures

- (c. 2000) the **site-specific sculptural works created by Charles Alfred Clement** were removed and relocated to three sites without consultation with the Clement estate or Clement family. The pieces were dispersed, without interpretive context, without clear artistic attribution, and outside their intended architectural environment.
- For more than a decade, a group 1 of these sculptures has remained on a **City-owned vacant and boarded property at 36th Street and Park Avenue**. During this period, the works have suffered **damage, repainting, and deterioration**, and have lacked any conservation oversight or public interpretation.



- The *Turnkey* sculptures have suffered several distinct but interrelated forms of harm.
- 1. Elements of the original work are missing. Three (3) known sculptural components that formed part of the unified installation cannot now be located within the City's inventory. Their whereabouts are unknown. This loss alone constitutes partial destruction of the work.
- 2. The remaining elements exhibit physical damage. Breakage, surface deterioration, over paint and structural compromise have been documented. The works have been left unsecured and exposed, further increasing the risk of damage or loss.
- 3. The work has been decontextualized. The remaining fragments are displayed without reference to the original design, without interpretive framework, and without spatial coherence. Presented as decorative and isolated objects, they no longer represent *Turnkey* as conceived by Clement.
- Decontextualization is not a neutral act. For a site-specific, integrated work, it is a form of distortion.



These actions have adversely affected all seven aspects of NRHP integrity. Integrity of location has been lost through removal from the original site. Integrity of setting has been lost through placement in environments unrelated to the architectural and social framework for which the work was conceived. Integrity of design has been compromised through fragmentation and the loss of original elements intended to function as a unified ensemble. Alterations to surface finishes and physical damage affect integrity of materials and workmanship. Collectively, these changes have fundamentally eroded integrity of feeling and association.

Request for Return and Stewardship of the Clement Sculptures

THPF respectfully request that the **City of Tucson** return the surviving **Charles Alfred Clement sculptures** removed during the South Park redevelopment c. 2000 to the **Tucson Historic Preservation Foundation** for proper conservation, interpretation, and long-term stewardship.

Reinstallation is proposed at the **Bondante House**—designed by Clement in 1956 and now owned by the Tucson Historic Preservation Foundation—where the works can be preserved, contextualized, and publicly accessible within an architecturally and historically appropriate setting.

This action will ensure that Clement's public artworks are cared for consistent with their artistic significance and restored to an environment that reflects the intent, integrity, and legacy of the artist.



Bondante House (1956) & Return of the Sculptures

- Bondante House (1956) – Mid-century modern residence designed by Charles Clement for his family.
- Owned and stewarded by the Tucson Historic Preservation Foundation (THPF)
- Represents a the most significant surviving property associated with Clement’s artistic and architectural legacy
- Reinstallation at this site will support restoration of historic context and association
- This solution will help cure the current diminishment of integrity caused by the sculptures’ displacement
- Reuniting the sculptures with the property supports authentic interpretation of Clement’s integration of art and architecture
- THPF anticipates submitting a City of Tucson Historic Landmark nomination in the coming weeks
- Landmark designation will provide long-term protection and stewardship for both the site and the sculptures



THE *Bondante* HOUSE



TUCSON
HISTORIC PRESERVATION
FOUNDATION